



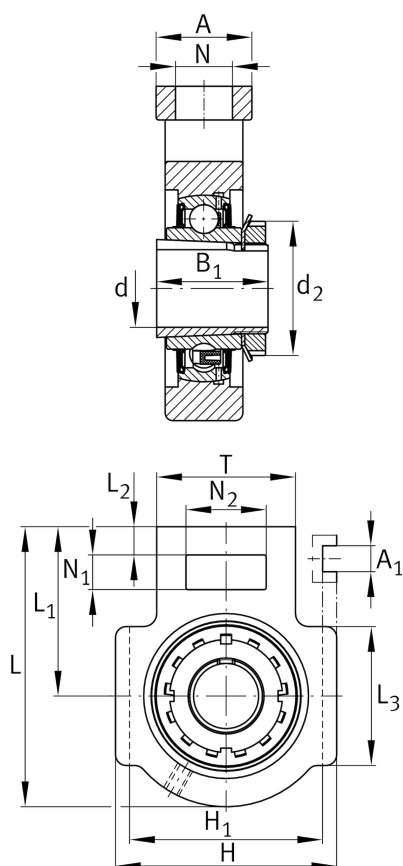
FAG

## UKT205

Take-up housing unit

Schaeffler ID:  
0823342340000Housing units UKT, cast iron housing,  
radial insert ball bearing with adapter  
sleeve, RSR seals, for linear motion

## Technical information



## Main Dimensions &amp; Performance Data

d	25 mm	Bore diameter
H	89 mm	Height
L	97 mm	Length total
	0.85 kg	Weight

## Mounting dimensions

A <sub>1</sub>	12 mm	Width guidance groove
	0.2 mm	Upper width guidance groove tolerance
	0 mm	Lower width guidance groove tolerance
H <sub>1</sub>	76 mm	Distance guidance grooves
	0 mm	Upper distance guidance groove tolerance
	-0.5 mm	Lower distance guidance groove tolerance
N	19 mm	Fixing bore

## Dimensions

L <sub>1</sub>	62 mm	Distance shaft axis
L <sub>2</sub>	10 mm	Length fixed link
L <sub>3</sub>	51 mm	Length guidance groove
A	32 mm	Width housing fixing side
N <sub>1</sub>	16 mm	Width recess
N <sub>2</sub>	32 mm	Height recess
T	51 mm	Height housing fixing side
Q	M6	Connection thread for lubrication
A <sub>2</sub>	24 mm	Width housing

## Additional information

T205	Housing
UK205	Bearing designation

**Temperature range**

T <sub>min</sub>	-20 °C	Operating temperature min.
T <sub>max</sub>	120 °C	Operating temperature max.