

FAG

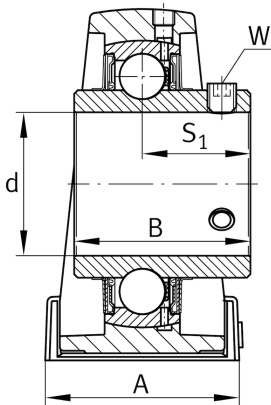
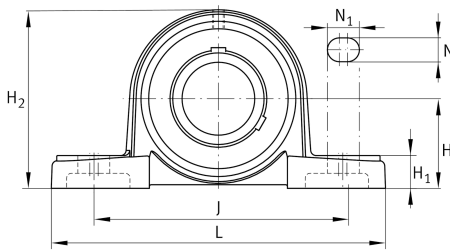
UCP201

Plummer block housing unit

Schaeffler ID:
0819896950000

Plummer block housing units UCP, cast iron housing, with long base, radial insert ball bearing with grub screws in inner ring, RSR seals

Technical information

**Main Dimensions & Performance Data**

d	12 mm	Bore diameter
L	127 mm	Length total
H ₂	62 mm	Height
	0.64 kg	Weight

Mounting dimensions

J	95 mm	Distance fixing bore
N	13 mm	Width (slot)
N ₁	19 mm	Length (slot)

Dimensions

H	30.2 mm	Distance shaft axis
A	38 mm	Width (base)
H ₁	14 mm	Height (base)
B	31 mm	Width
S ₁	18.3 mm	Distance of raceway to locking collar
Q	M6	Connection thread for lubrication

Additional information

P203	Housing
UC201	Bearing designation

Temperature range

T _{min}	-20 °C	Operating temperature min.
T _{max}	120 °C	Operating temperature max.