

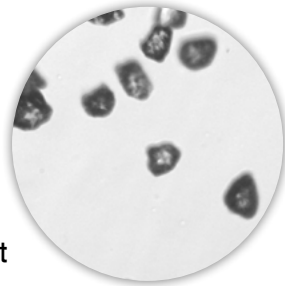
## Diamond Products

Kemet offer a wide range of standard and special Diamond Products formulated and manufactured in our quality controlled laboratories. Each is a special blend of diamond powder with a specific grading and concentration in a chemical carrier to give the optimum:

- Stock removal and surface finish.
- Ease of cleaning.
- Temperature resistance.
- Lubricity to prevent drying out.

With changing technology, new Kemet Diamond Products are continually being developed to meet specific requirements. These products may well incorporate different types of diamond to suit the application such as synthetic or natural, monocrystalline or polycrystalline powder, suspended in a wide range of chemical carriers.

Our laboratories can also help to develop formulations specific to your application.



Micron	Grade
0.1	140,000*
0.25	25,000*
1	14,000*
3	8,000*
6	3,000*
8	1,800*
14	1,200*
25	600
45	300
60	230
90	170

\*Estimated

### • Diamond Grading

The exceptionally close grading standards developed by Kemet exceed many international standards and guarantee that Kemet Diamond Products are manufactured to the closest tolerances.

### • Quality Control

Microscopic and computer analysis of the diamond powder ensures that it is exactly the correct grading and shape to maximise cutting performance.

### • Consistency of Performance

Strictly manufactured to ISO 9001:2008 quality assurance standards - our guarantee that the quality will be consistent.

### • User Friendly

Manufactured from the highest purity chemicals - safe to use and friendly to the environment.

**We use only the best quality virgin diamond powder and the highest purity chemicals in Kemet Diamond Products.**

## Diamond Compound / Paste

For hand lapping applications Kemet offer a huge range of Diamond Compounds for rapid stock removal, superfine surface finish, lapping and pre-polishing. Micron sizes ranging from 1/10 to 90, soluble in either oil (Type L), water (Type W) or both (Type KD). High thermal stability of the chemical carrier ensures that Kemet Diamond Compound resists frictional heat, remains stable, and keeps its suspension properties under operating conditions. For our full range, please view our website or tool room catalogue.



## Liquid Diamond



Our range of Kemet Liquid Diamond products are available as oil soluble, water soluble or as emulsions. The chemical composition of the carrier fluids is carefully controlled to ensure that they are compatible both with the Kemet Lapping Plate and the components being lapped.

- Precision graded diamond particles in a fluid.
- Optimum viscosity and chemical composition of each Liquid Diamond Product gives fast stock removal with the ability to produce superfine surface finishes.
- Suitable for dispensing with the Kemet Electronic Dispensing System thus eliminating wastage and reducing lapping costs.
- Specially formulated Liquid Diamond Products enable parts to be easily cleaned.

## TYPE K (Oil / water emulsion) Liquid Diamond

An excellent, low viscosity oil/water emulsion suitable for all general purpose lapping.

Micron	400g			2000g			
	Standard	Strong	Extra Strong	Standard	Strong	Extra Strong	
A	1/10	211001	211021	-	211080	-	-
	1/4	211002	211022	-	211081	-	-
	1/2	211003	-	-	211083	-	-
	1	211004	211024	-	211084	211105	-
	2	211005	211025	-	-	-	-
	3	211006	211026	211046	211086	211106	211126
	4.5	211007	211027	211047	211087	211107	211127
B	6	211008	211028	211054	211088	211108	211128
	8	211009	211029	-	211089	211109	211129
	10	211010	211030	211050	211132	211110	211130
	14	211011	211031	211051	211091	211111	211131
C	25	211012	211032	211052	211092	211112	211133
	45	211013	211033	211053	-	-	-

## TYPE O (Oil based) Liquid Diamond

An excellent, general purpose, low viscosity oil based suspension suitable for heavy parts and high volumes.

Micron	400g			2000g			
	Standard	Strong	Extra Strong	Standard	Strong	Extra Strong	
A	1/10	216001	-	-	216082	-	-
	1/4	216002	-	-	216083	-	-
	1/2	216003	-	-	216084	-	-
	1	216004	216024	-	216085	216104	-
	2	216005	216025	216045	216081	216105	216136
	3	216006	216026	216046	216086	216106	216137
	4.5	216007	216027	216047	216087	216108	216138
B	6	216008	216028	216048	216088	216107	216139
	8	216009	216029	216049	216089	216109	216140
	10	216016	216030	216050	216095	216110	216141
	14	216011	216031	216051	216092	216111	216142
C	25	216012	216032	216052	216090	216112	216143
	45	216013	216033	216053	216094	216113	216144

## TYPE WA (Water based) Liquid Diamond

An excellent, general purpose, low viscosity water based slurry for general purpose lapping where oils and emulsions can not be used.

Micron	400g			2000g			
	Standard	Strong	Extra Strong	Standard	Strong	Extra Strong	
A	1/10	214001	-	214042	214071	-	214121
	1/4	214002	-	214043	214072	-	214122
	1/2	214003	-	214044	214073	-	214123
	1	214004	214024	214045	214074	214106	214124
	3	214006	214027	214047	214076	214108	214126
	4.5	214007	-	214048	214077	-	214127
	6	214008	214028	214049	214078	214080	214128
B	8	214009	214029	214050	214081	214101	214129
	10	214010	214030	214052	214082	214110	214130
	14	214011	214031	214051	214083	214079	214131
	C	25	214012	214032	214053	214084	214103
45		214013	214033	214054	214085	214111	214133

A = Final Polishing B = Lapping & Pre-polishing C = Rapid Stock Removal